

OFFICE FOR LEASE OR SALE - BUILD TO SUIT

Specification:

- 2-story office building
- Floor plate 9,000 square feet
- 4.8 parking per 1,000 square feet

Building Locations:

- Relief from traffic and parking hassles in other Tampa office markets. People want to avoid the traffic in Westshore and the parking decks downtown
- The I-75 location provides excellent access to retail shopping, restaurants, banks and hotels
- 1.5 miles from I-75

Building Features:

- Efficient floor plates and column spacing
- Fiber optics
- Extensive landscaping
- New construction
- Individual suite access
- Immediate occupancy



For more information
please contact:

813.977.5201
Ext. 2



12570 Telecom Drive
Tampa, FL 33637
813.977.5201

www.unitedamericanrealty.com

12510
Telecom Park
OFFICE FOR SALE OR LEASE

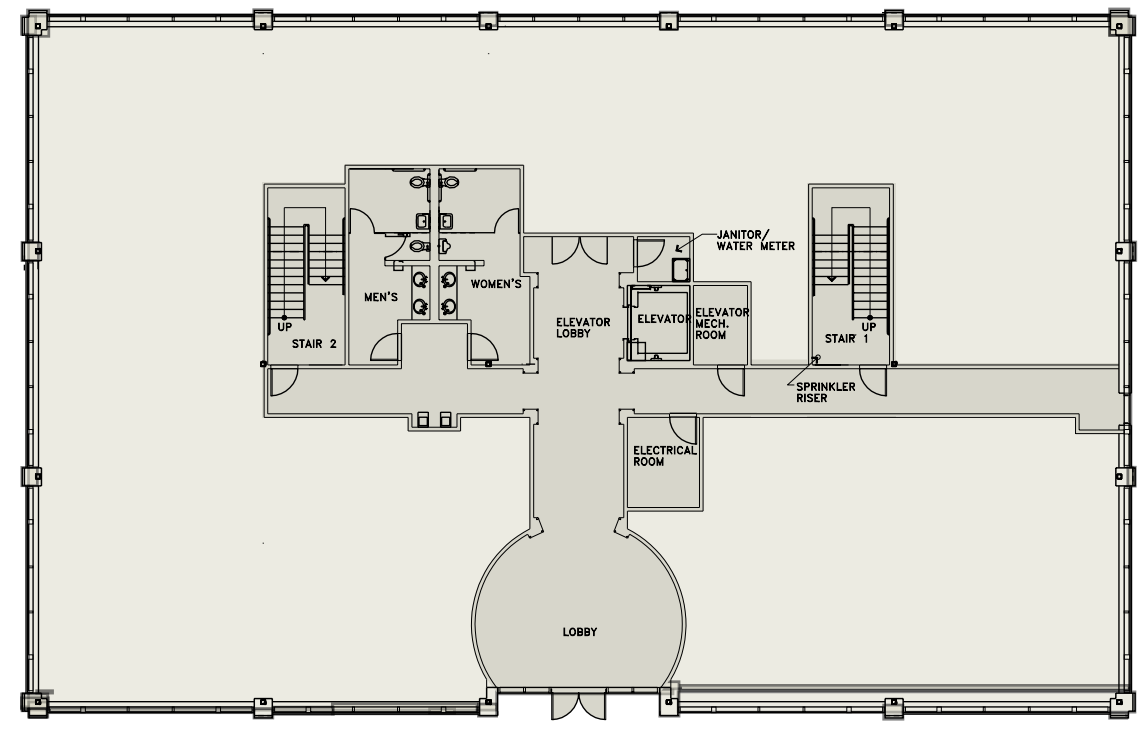


12510 TELECOM PARK, INC.

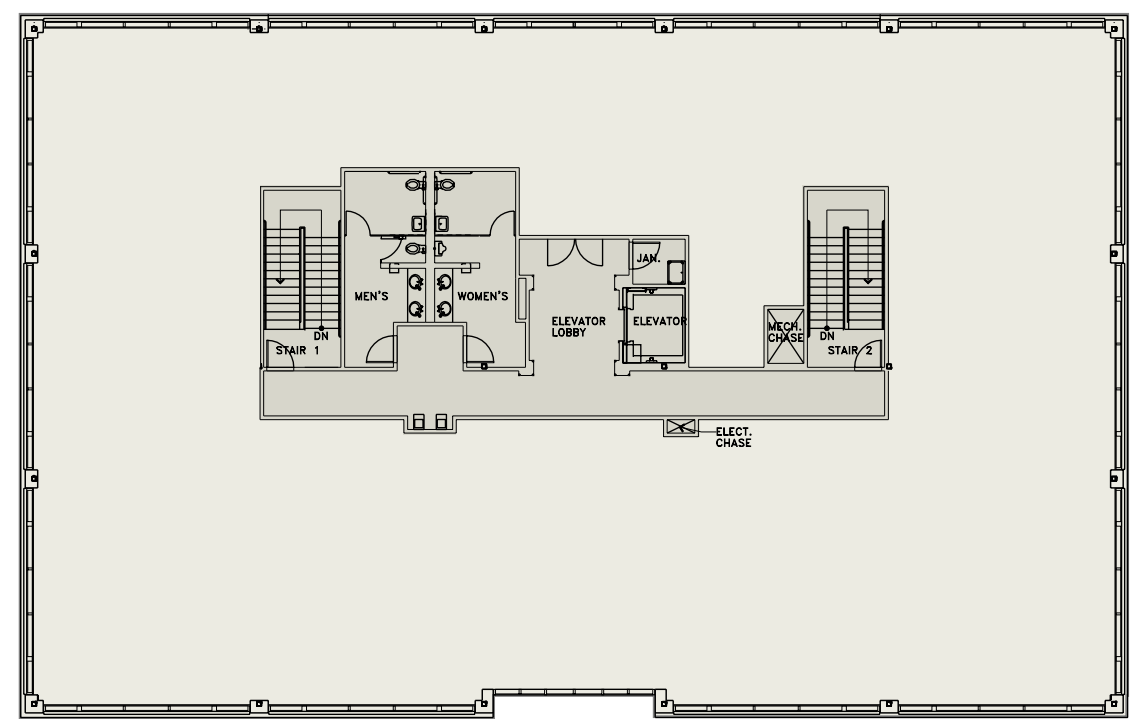


12510 Telecom Park

TWO STORY



FIRST FLOOR PLAN



SECOND FLOOR PLAN

Square footages are estimated. Refer to survey contained in condominium for actual measurements.